

3-BEDROOM

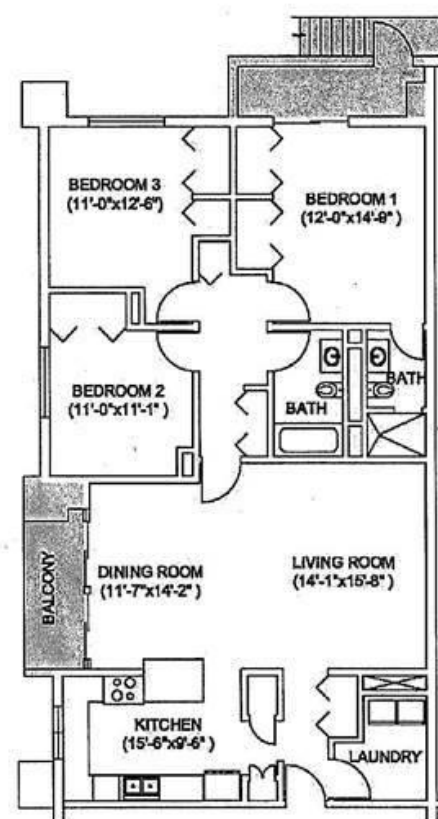
TOWER UNITS

Per CFASINST11101.12 (series) Military Family Housing offer is based on rank and family composition and not pet requirements or location preference.



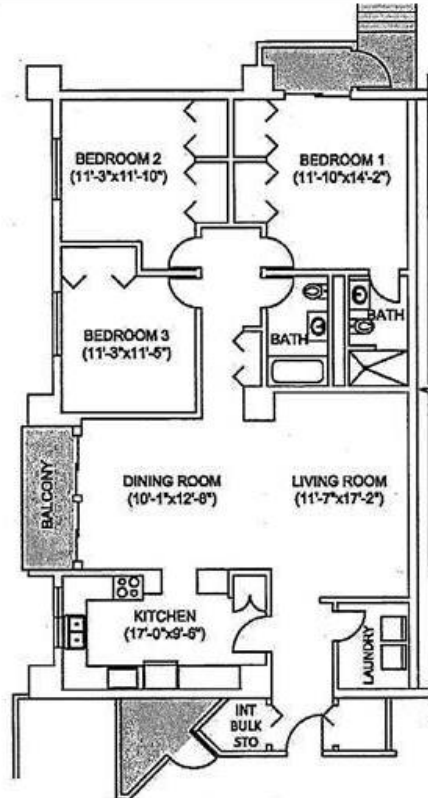
FLOOR PLAN

Hario Village 3-Bedroom Tower



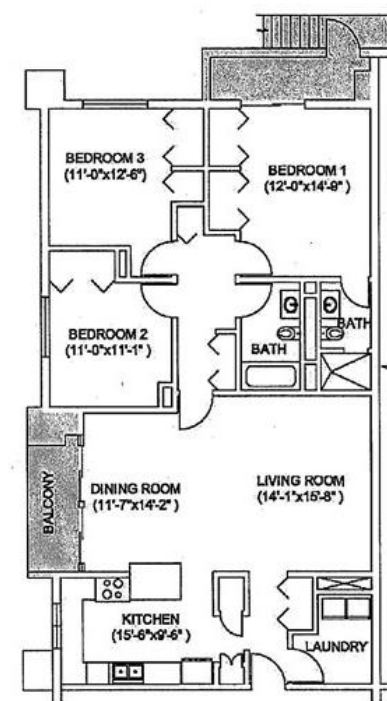
Unit Type GSF:	1515 SF
Areas Not Included in GSF:	■
Year Built:	1992, 2007
Year Renovated:	2016

Dragon Vale 3-Bedroom Tower



Unit Type GSF: 1586 SF
 Areas Not Included in GSF:
 Year Built: 1987
 Year Renovated: 2011

Dragon Vale 3-Bedroom Tower (2)



Unit Type GSF: 1558 SF
 Areas Not Included in GSF:
 Year Built: 2011
 Year Renovated: NA

LAUNDRY ROOM



KITCHEN







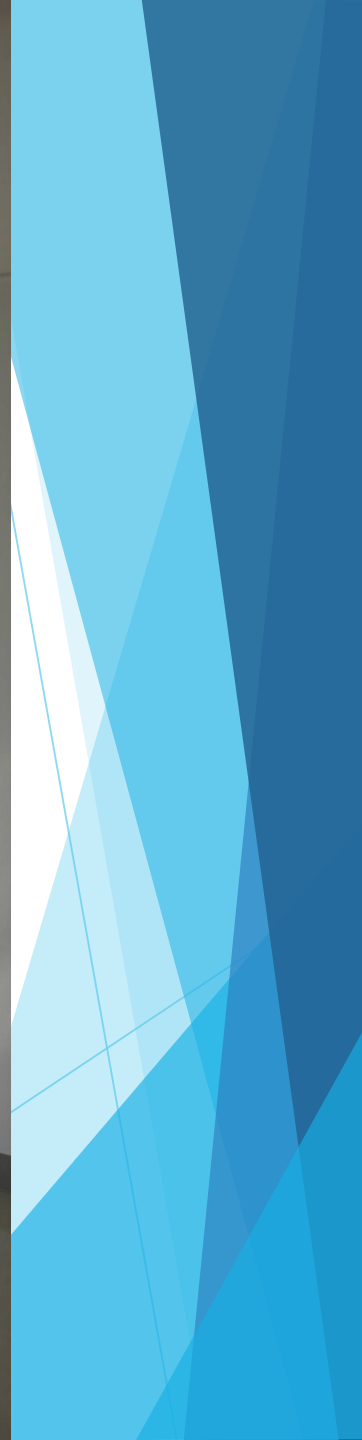
LIVING/DINNING



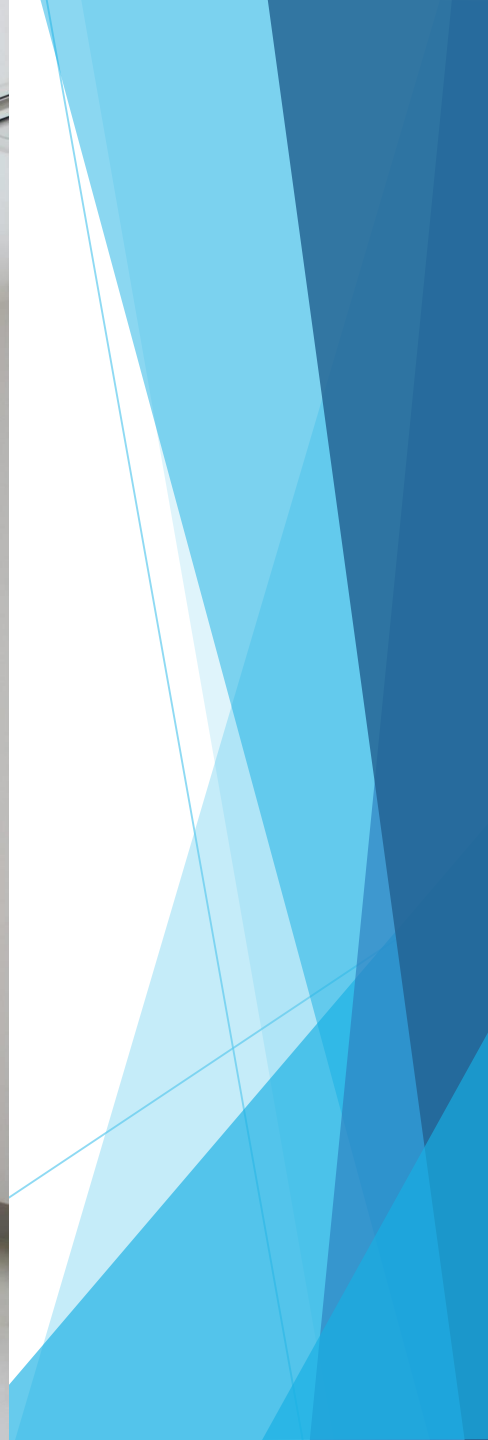




BEDROOM







MASTER BATHROOM



BATHROOM



STORAGE



3-BEDROOM

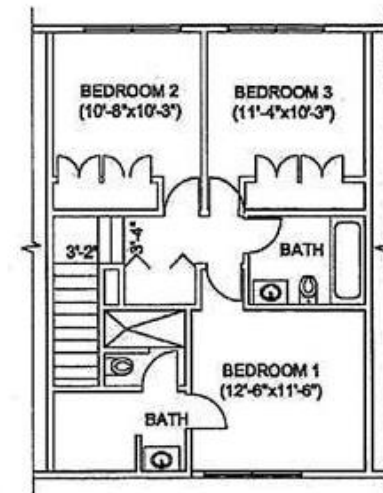
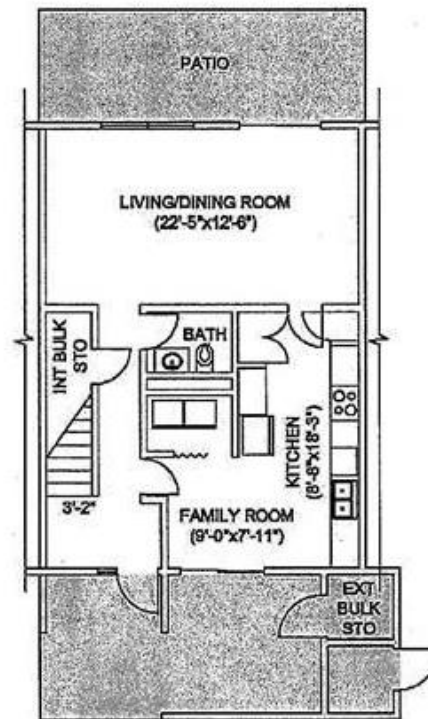
TOWNHOUSE

Per CFASINST11101.12 (series) Military Family Housing offer is based on rank and family composition and not pet requirements or location preference.



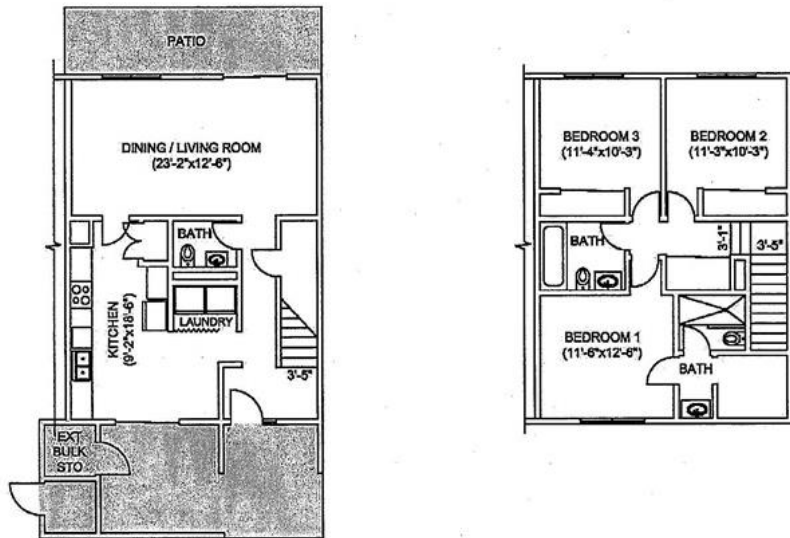
FLOOR PLAN

Hario Village 3-Bedroom Townhouse



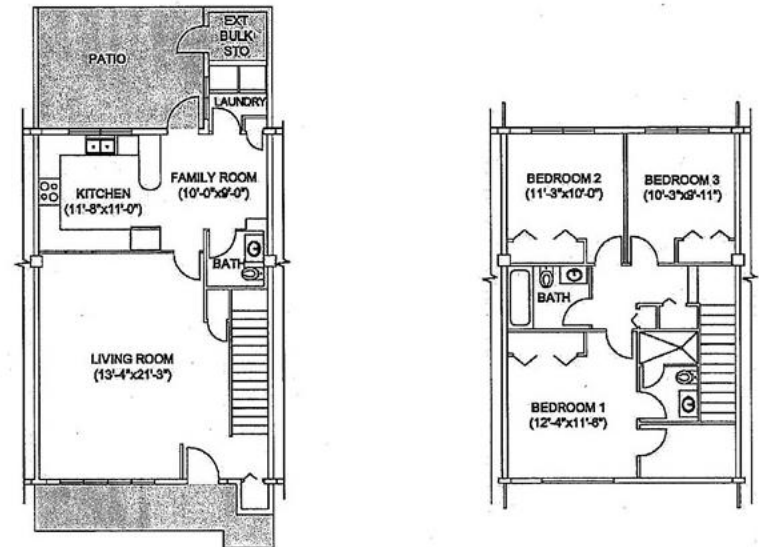
Unit Type GSF:	1501 SF
Areas Not Included in GSF:	■
Year Built:	1988
Year Renovated:	2012

Dragon Vale 3-Bedroom Townhouse (1)



Unit Type GSF: 1569 SF
 Areas Not Included in GSF: ■
 Year Built: 1986
 Year Renovated: 2012

Dragon Vale 3-Bedroom Townhouse (2)



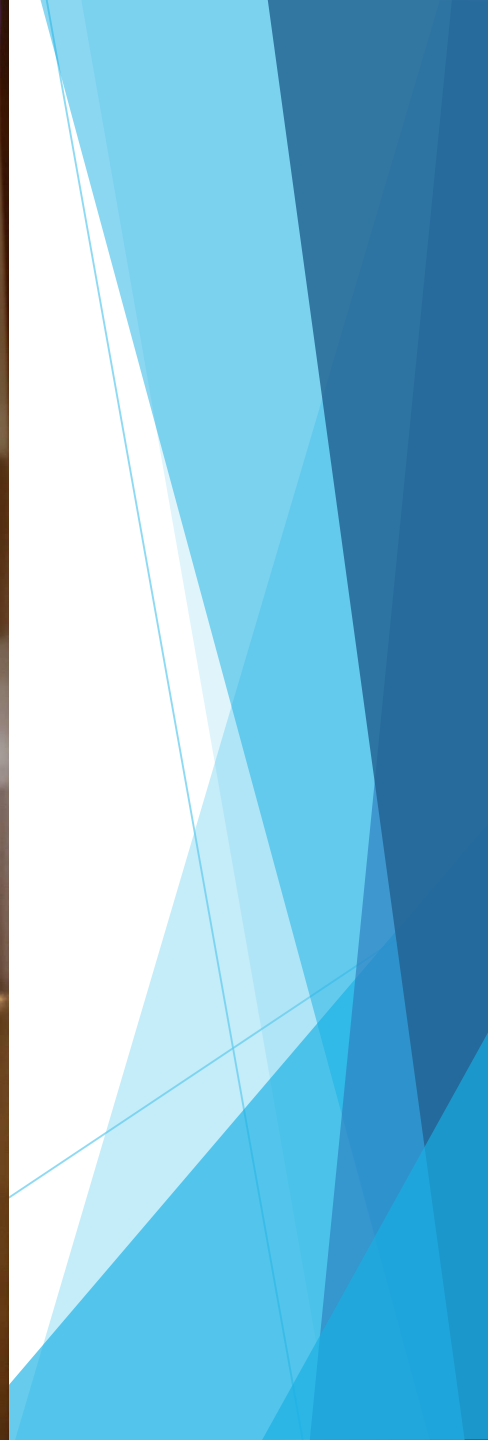
Unit Type GSF: 1571 SF
 Areas Not Included in GSF: ■
 Year Built: 2011
 Year Renovated: NA

ENTRYWAY



KITCHEN
L
AUNDRY





DINNING ROOM



LIVING ROOM

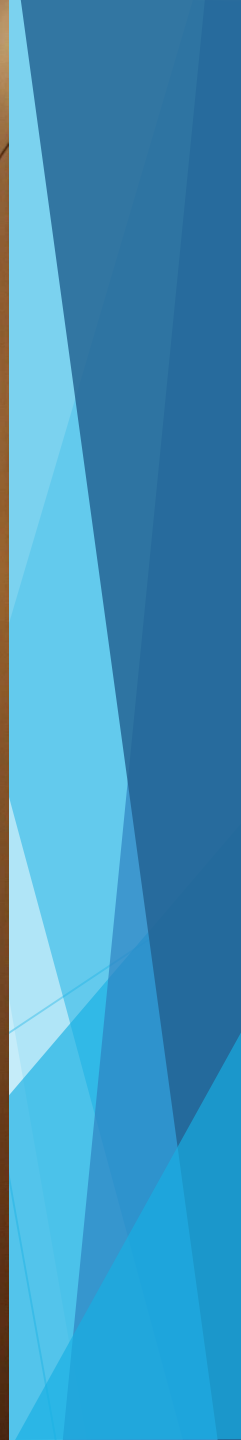




STAIRS

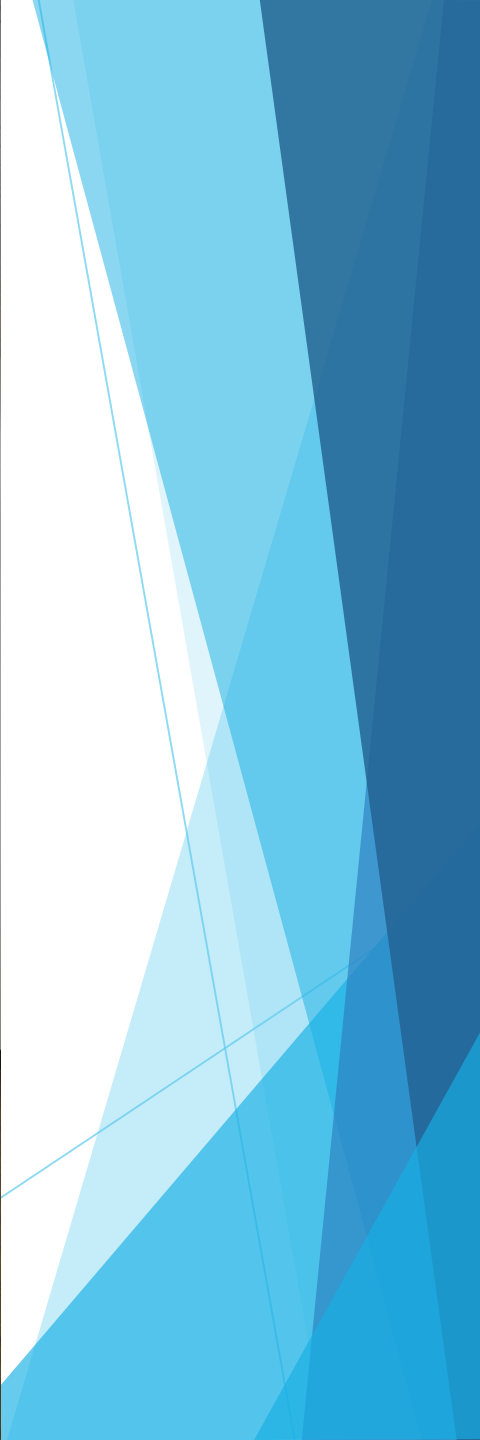


2ND FLOOR



BEDROOM





BEDROOM



MASTER BATHROOM







BATHROOM

